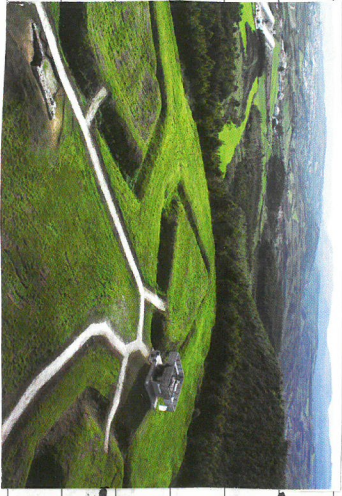
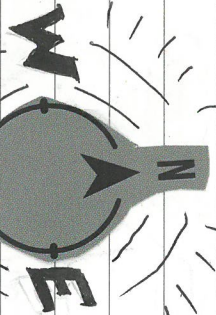
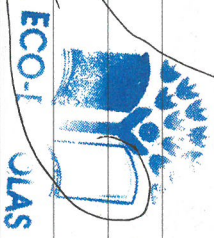




# Escola Básica e Secundária Paquim Inácio da Cruz, Sobral

ALÉJICS

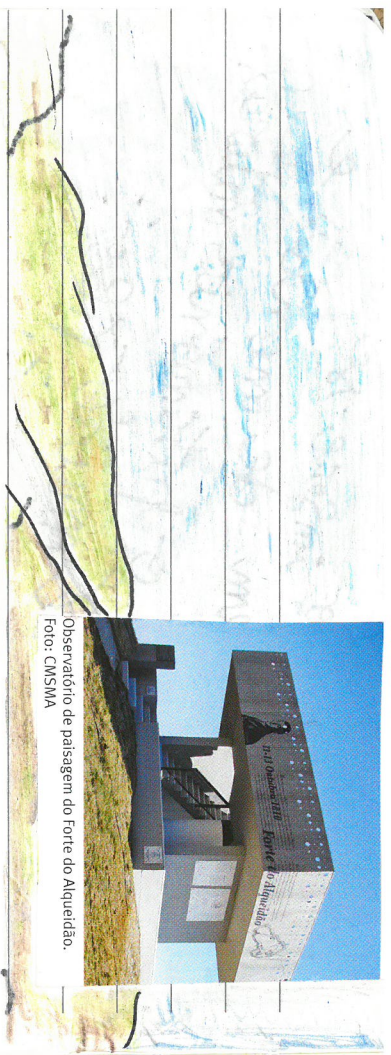


## Sobral de Monte Agraço

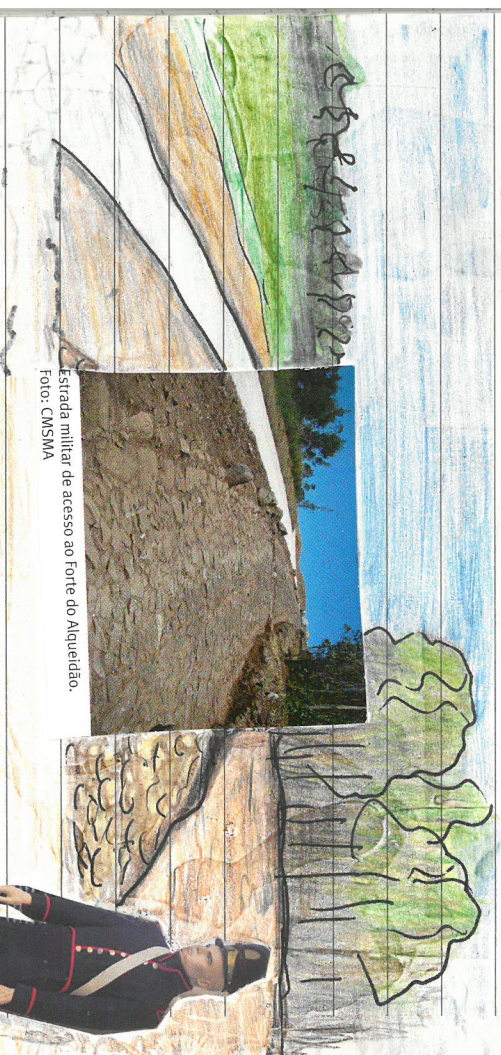
Um concelho a descobrir!

O melhor concelho insere-se e  
numa paisagem de momentos naturais  
agoras, grande o património natural  
e muito mais...





Observatório de paisagem do forte do Alqueidão.  
Foto: CMSMA

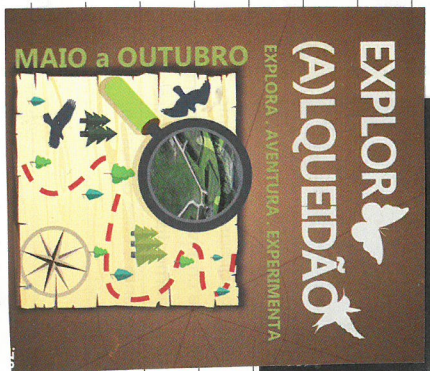
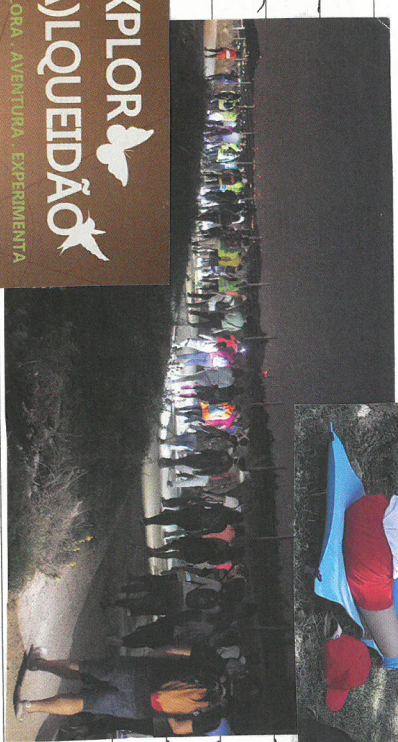


Estrada militar de acesso ao Forte do Alqueidão.  
Foto: CMSMA

↳ A **boa** **Sagom** **mostra** **quanta** **importante** **marca** **histórica** **o** **lado** **central** **do** **Sobral** **na** **estratégia** **defensiva** **dos** **invasões** **francesas** **marcando** **um** **dos** **espaços** **mais** **importantes** **na** **consolidação** **da** **Vitória** **contra** **os** **malmar.**

**Grande** **mostra** **de** **identidade!**

A **439** **m** **de** **altitude**, **o** **forte** **de** **Alqueidão** **era** **o** **posto** **mais** **elevado** **do** **concelho** **e** **de** **tudo** **o** **sistema** **defensivo**. **Aí** **há** **uma** **visibilidade** **desde** **a** **Alfândega** **do** **rio** **Tejo**.



Atualmente, é um importante **posto** **turístico** **e** **cultural** **da** **região** **deste**.

*João*

As aves de diversas espécies estão sempre presentes na paisagem

8°C

Cereleto

Mafalda Arends

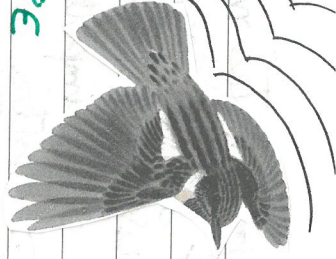
Eva Mogueira

David Fernandes

Sara Patrão

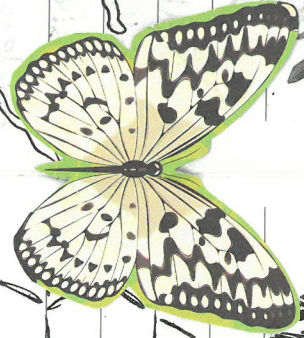
Maniama

Anna Matilde



Cartaxo (Saxicola Rubicola)

Portad Semum (Sparverij)



... tal como os insetos

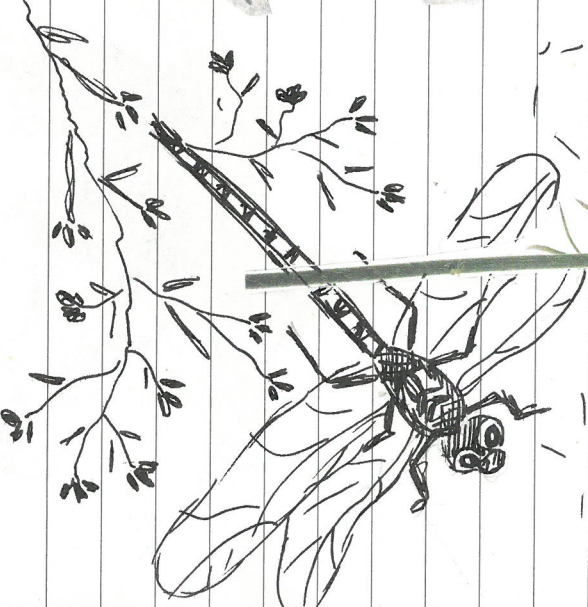
97A  
Harguinda Esteves  
Matilde Silva



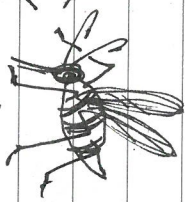
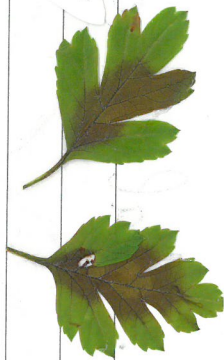
Fintassilgo (Carduelis carduelis)



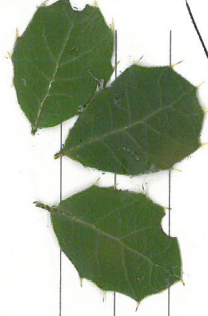
Qualquer sardalhaça e pua aviação. Ou não? 😊



BÉTULA  
*Betula pubescens*



ABELHEIRA PARDÁ  
*Ostrya fuscata*



PILRITTEIRO  
*Eratogonum monogynum*



PÁSCOAS

*Berberilla valentina*



MEDRONHEIRO

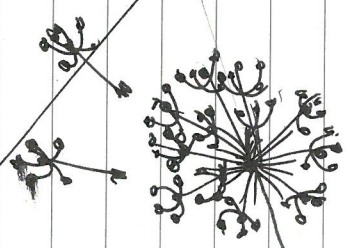
*Arbutus unedo*



maio

2024

herbaria menta capax



CARVALHO-PORTUGUES

*Quercus faginea*

